

Acer Projector Gateway

Introduction

The Acer Projector Gateway (APG) is a smart, integrated system that enhances presentations via your Acer projector. The APG provides versatile source connectivity, the latest eDisplayPro Management tools for networking display, supports for media contents playback via the built-in decoder and more.

Networking APG features

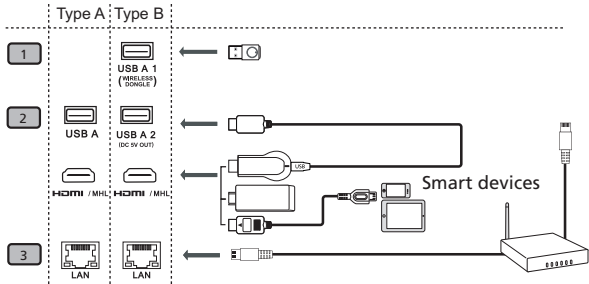
- With high-performance wireless projection via an acer USB WiFi adapter or an RJ-45 port for wired connections (only for the models with RJ-45 port).
- The projector can act as an access point (AP) or work in WiFi con-current mode when doing networking display.
- Users can easily launch the Acer eDisplayPro Management to do Full screen, L/R, 4-split screen projection and enable high quality video streaming.
- Powerful wireless display features ready for devices with different OS (MS Windows, Mac OS, Android, iOS)
- Supports wireless network security (WPA-PSK, WPA2-PSK).
- Acer Projector Gateway Web Management enables a web-based control of Acer projector for Windows NB/PC (only when the projector is in AP mode).
- Supports firmware upgrade via USB flash drive.

Multi-media features

- Fancy and stylish user interface for better experience.
- You can enjoy media & documents playback via USB flash drive.
- Supports high resolution JPEG and BMP picture formats, slideshow and various slideshow effects for the best viewing experience.
- Supports MP3, PCM and WMA...audio formats, music spectrum and random play function for your pleasing.
- Supports office documents playback (Word, Excel, PowerPoint, PDF).
- Easy control for all media functions by the remote control.
- You can mirror or extend your screen via the source USB Connection.

Get Started

Connecting multi-media device to the projector



#	Component	Description
1	WirelessProjection-Kit (optional)	For Acer WirelessProjection-Kit (optional) only. Before the projector is turned on, you need to insert the wireless projection-kit (optional).
2	USB Type A	Connects to USB flash drive for multimedia playback.
3	LAN port	Connects to an Ethernet 10/100-based network.

To switch between different inputs, press SOURCE on the projector or remote control to open the Source menu that allows you to select an input signal source.



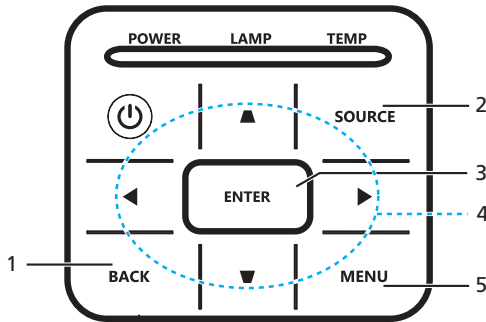
Copyright © 2017. Acer Incorporated.
All Rights Reserved.


Changes may be made periodically to the information in this publication without obligation to notify any person of such revisions or changes. Such changes will be incorporated in new editions of this manual or supplementary documents and publications.

This company makes no representations or warranties, either expressed or implied, with respect to the contents hereof and specifically disclaims the implied warranties of merchantability or fitness for a particular purpose.



Control Panel and Remote Control

Control Panel



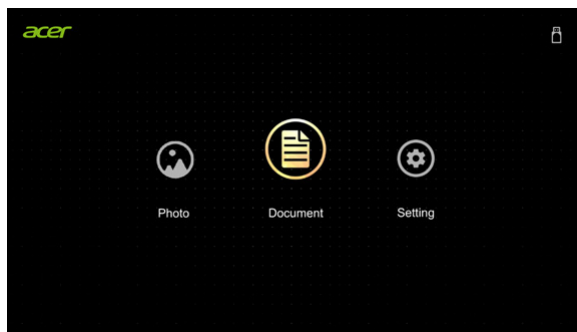
#	Function	Description
1	BACK	Cancels your selection, or goes back to previous page.
2	SOURCE	Press to open the Source menu that allows you to select an input signal source. 
3	ENTER	Confirms your selection of items.
4	Four directional selection keys	Selects the media files or features in four directions.
5	MENU	Launches the projector Onscreen Display (OSD) menu.

Remote Control

#	Function	Description
1	ENTER	Confirms your selection of items.
2	BACK	Cancels your selection, or goes back to previous page.
3	MEDIA	Goes to MEDIA HOME page.
4	 Four directional select pad	Selects the media files or features in four directions.
5	SOURCE	Press to open the Source menu that allows you to select an input signal source. 
6	MENU	Launches the projector Onscreen Display (OSD) menu.

Media Mode

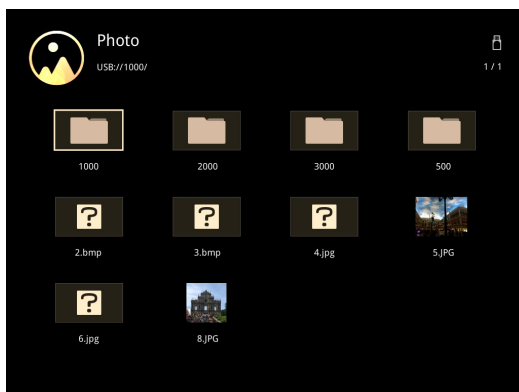
Enter Media mode by selecting source to "Media" and you will see Media home page as below. This mode allows you to browse data files stored in USB flash drive after connecting to projector.





Photo

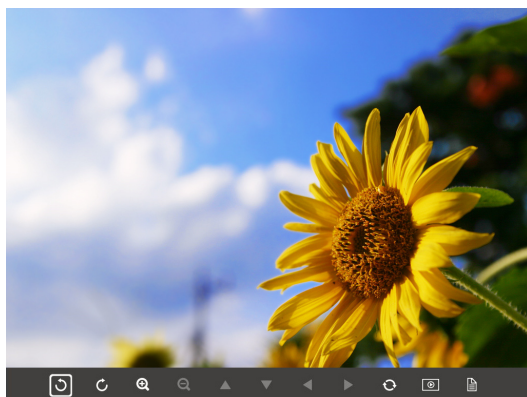
When viewing photos, you can press ▲/▼/◀/▶ to select file and press ENTER to access.



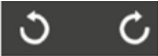
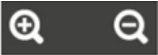
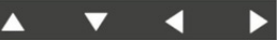



Note 1: Support BMP and JPEG photo format only.

Note 2: Not-supported photo would show forbidden icon when preview.

When playing photos, you can press ◀/▶ to select a feature and press "ENTER" to execute it. For details, see "Feature Function".



Feature Function (Photo)

Icon	Function Description
	Rotate photo by 90 degrees
	Zoom in / Zoom out
	<ol style="list-style-type: none"> 1 Pan move when zoom in. 2 Execute previous / next page when tool bar disappears (Not supported when zoom in)
	Resume photo size to default by 1x
	Slide show
	Photo information
PgUp / PgDn (on remote controller)	Execute previous / next page after tool bar disappears

Supported photo formats

Image Type	Sub type	Color Space	Max pixels
JPEG	Baseline	YUV400	8000 x 6000
		YUV420	
		YUV422	
		YUV440	
		YUV444	
	Progressive	YUV400	1600 x 1200
		YUV420	
		YUV422	
		YUV440	
		YUV444	
BMP			1600 x 1200

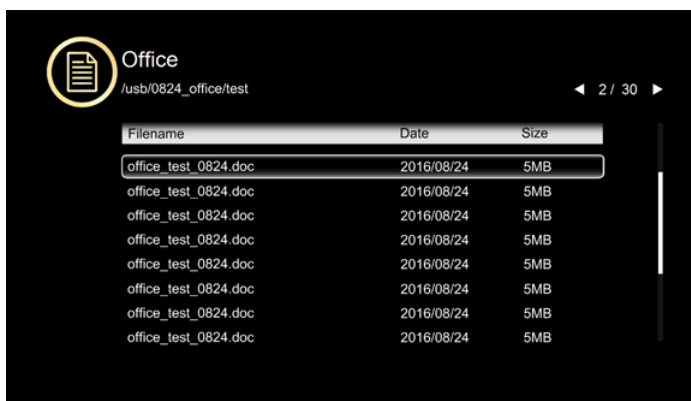


NOTE: BMP resolution supports up to 2790x1960; JPEG progressive resolution support up to 1600x1200.



Document

When browsing document files, you can press ▲/▼/◀/▶ to select file and press ENTER to access. Remote controller or keypad button behavior is different when browsing different types of documents.



1

Acer Projector Gateway

English

Introduction

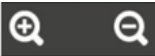
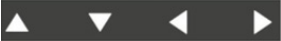


The Acer Projector Gateway (APG) is a smart, integrated system that enhances presentations via your Acer projector. The APG provides versatile source connectivity, the latest eDisplayPro Management tools for networking display, supports for media contents playback via the built-in decoder and more.

Networking APG features

- With high-performance wireless projection via an acer USB WiFi adapter or an RJ-45 port for wired connections (only for the models with RJ-45 port).
- The projector can act as an access point (AP) or work in WiFi con-current mode when doing networking display.
- Users can easily launch the Acer eDisplayPro Management to do Full screen, LR, 4-split screen projection and enable high quality video streaming.
- Powerful wireless display features ready for devices with different OS (MS Windows, Mac OS, Android, iOS)



Feature Function (Document)

Icon	Function Description
	Zoom in / Zoom out (The default magnification is by system at first)
	<ol style="list-style-type: none"> 1 Pan move when zoom in. 2 Execute previous / next page when tool bar disappears (Not supported when zoom in)
	Fit to height / Fit to width / Fit to screen
	Present page / Total pages
PgUp / PgDn (on remote controller)	<ol style="list-style-type: none"> 1 Execute previous / next page after tool bar disappears (For ppt, word, pdf) 2 Switch worksheet (For excel)

Supported Document Formats

File Format	Support Version	Pages/Lines Limitation	Size Limitation
Adobe PDF	PDF 1.0	Up to 1000 pages (One File)	Up to 75MB
	PDF 1.1		
	PDF 1.2		
	PDF 1.3		
	PDF 1.4		
Microsoft Word	British Word 95.	-	Up to 100MB
	Word 97, 2000,2002, 2003.		
	Word 2007(.docx), 2010(.docx)		

Microsoft Excel	British Excel 5, 95.	Row Limit: up to 595	Up to 15MB
	Excel 97, 2000, 2002, 2003.	Column Limit: up to 256	
	Excel 2007(.xlsx),2010(.xlsx).	Sheet: up to 100	
	Office XP Excel.	Row Limit: up to 595 Column Limit: up to 256 Sheet: up to 100	
Microsoft PowerPoint	British PowerPoint 97.	Up to 1000 pages (One File)	Up to 19MB
	PowerPoint 2000, 2002, 2003.		
	PowerPoint 2007(.pptx).		
	PowerPoint 2010(.pptx).		
	Office XP PowerPoint.		
	PowerPoint presentation-2003 and earlier(.pps)		
	PowerPoint presentation-2007 and 2010(.ppsx)		



NOTE 1: Decoding may take a while for large files with complex contents.

Note 2: Objects embedded in files cannot be activated or viewed.

Note 3: For Microsoft Word

(1) No support for advanced settings, such as drawing plug-in or table background settings.

(2) Contents outside the defined borders in Microsoft Word will not be displayed.

(3) Not support Bold Text in Simple Chinese front

Note 4: For Microsoft PowerPoint

(1) Slide effects not supported.

(2) Password-protected sheets are not protected.

Note 5: For Microsoft Excel

(1) Worksheets are displayed individually and sequentially when the workbook has multiple worksheets.

(2) Page layout and numbering may be changed during decoding.



Setting

Menu Item	Options
Photo Display Ratio	Original, Full Screen
Slideshow Duration	3 sec, 5 sec, 10 sec
Software Upgrade	Network, USB Drive

Software Upgrade Instruction

There are 2 ways to do this:

■ Via USB flash drive

- (1) Download new firmware by one compressed file from acer global website.
- (2) Copy the uncompressed file in USB flash drive and plug in projector.
<Note: file name is by Model Name_USB_6 digits.bin (Ex: P5230_USB_000000.bin)
- (3) Select source to "Media".
- (4) Go for: Setting ' Software Upgrade' Select "USB Drive" and press Enter to start.
- (5) Projector will shut down when upgrade finishes.

■ Via Network

- (1) Connect a Acer WirelessProjection-Kit dongle (optional) or a RJ45 cable to the projector.
(Make sure it connects to the internet.)
- (2) Select source to "Media".
- (3) Go for: Setting ' Software Upgrade' Select "Network" and press Enter to start.
- (4) Projector will shut down when upgrade finishes.



NOTE 1: Do not turn off projector while the firmware upgrade is processing.

NOTE 2: When upgrading the firmware, remove all cables and other USB devices.

NOTE 3: External USB HDD is probably not supported if connection lacks of USB power (recommend to use Y-cable) since USB power is not enough.

NOTE 4: The disk with partition is not supported.

Acer eDisplayPro Management

Acer eDisplayPro Management helps users connect and control Acer projector. The utility could be downloaded directly from projector or acer official website.

Installation and Connecting Instruction



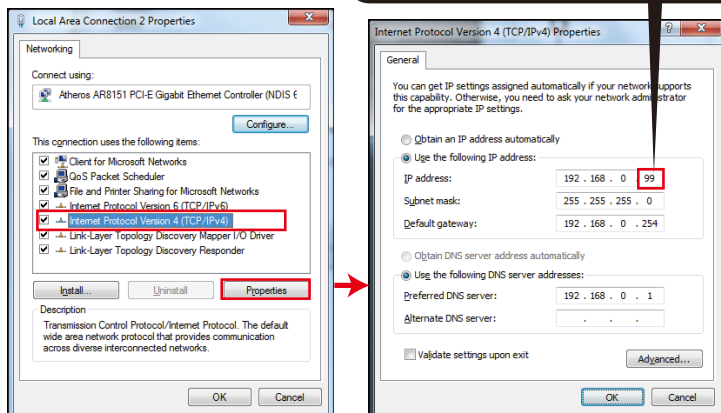
- **Step 1, Make sure your projector with network and select source by "LAN/WiFi"**
 - Install Acer WirelessProjection-Kit dongle (optional) to projector or connect LAN cable to projector. Power on projector and switch source by "LAN/WiFi".
- **Step 2, Download and install the software/APP for your device**
 - Mobile can download Acer eDisplayPro APP from Google play (Android) or Apple Store (iOS).
 - NB/PC can download Acer eDisplayPro installer form Acer global website. Or, you could open browser and enter server IP address by **192.168.100.10** (required to connect to projector to your device via LAN & set DHCP Off) to access acer webpage management to download installer. Passwords are required to login in before using (Default User ID: Administrator / Password: admin).

(The steps in this section is based on Windows 10 operating system)

1. Turn "Off" the DHCP option on the projector.
 2. Configure the IP address, Subnet Mask, Gateway, and DNS on projector.
 3. Open **Network and Sharing Center** page on your PC, and assign the identical network parameters to your PC as set on projector. Click "OK" to save the parameters.
- On the PC (Laptop), select **Start > Control Panel > Network Connections > Local Area Connection**, and select **Property**. In the **Properties** window,

select the **General** tab, and select **Internet Protocol (TCP/IPv4)**. Type in the IP address (IP address set between 192.168.100.1 ~ 192.168.100.254) and Subnet mask, then press "OK"

The last port number of address cannot be 0, 10 or 255.



4. Open browser and enter the Server IP address by 192.168.100.10 to find below homepage of acer webpage management

■ Step 3, Connect your device to projector

- Before starting the APP, user opens the WiFi settings on NB / PC / Smartphone / Tablet and find the projector name (Projector ID) which is AcerProjector_XXXXXXXX and connect it.

■ Step 4, Display

- Open the eDisplayPro APP and choose the device whose name is the same as Projector ID, then enter password shown on splash screen and enjoy display.



Note 1: If you receive any security warnings, click OK to proceed with the installation procedure.

Note 2: The Acer eDisplayPro shortcut will be created in desktop when the installation is completed.

System Requirements:

■ Windows OS

CPU	Dual Core Intel Core i 2.4Ghz
Memory	DDR 4GB and above

Graphic card	256MB VRAM or above
Operating System	Win7 / 8.0 / 8.1/ Win10 or above.



Note 1: ATOM and Celeron are not supported.

Note 2: OS with starter version is not supported.

Note 3: Extension mode may not be able to support some PC with Win 10 OS.

■ Mac OS

CPU	Dual Core Intel Core i 1.4 GHz or higher (PowerPC not supported)
Graphic card	Intel, nVIDIA or ATI graphic card with 64MB VRAM or above
Operating System	Mac OS X 10.11 or above. (Please make your OS is update-to-date)

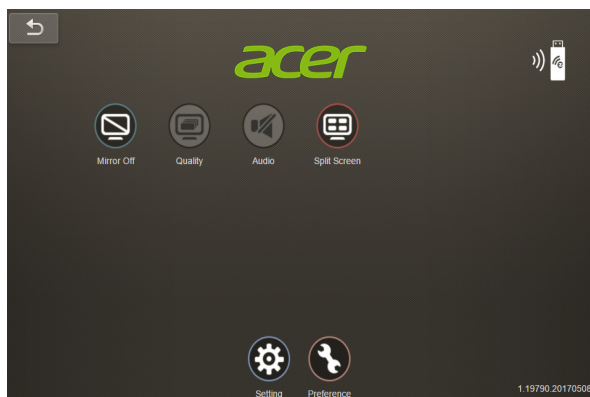
■ iOS

iOS	iOS 10 or above
Device	All iPhone™ models after iPhone 5 All iPad™ models after iPad mini 2
Storage	At least 40MB free space needed

■ Android

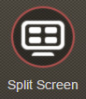
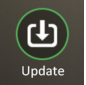
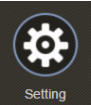
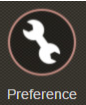
Phone/Pad	Android 5.0 or above with 1GB RAM
Resolution	WVGA ~1080p
CPU	Quad Core or above
Storage	At least 40MB free space needed

Acer eDisplayPro Management Interface (Windows/Mac)



Function and Features

Function	Description	Icon
Display	<ul style="list-style-type: none"> - Extension and mirror screen by On/ Off. - Default by Mirror Screen Off. <p><Note 1> Extension mode may not be able to support some PC with Win 10 OS.</p> <p><Note 2> Mirroring display is mainly for static document presentation and does not support iOS.</p> <p><Note 3> The resolution of video mirroring depends on system scaling and voice is made from your device.</p>	
Image Quality	<ul style="list-style-type: none"> - Default by High Image Quality. 	

SplitScreen	<ul style="list-style-type: none"> - Allow max. 4 users to display on screen together, but only host can decide the position - By Full, L/R, and 4-Split mirror projection. - Default by Full mirror projection. - The Split Screen not support audio and streaming. - With the permission from the host, the projection sequence is upper left, upper right, lower left and lower right. 	 Split Screen
Update	<ul style="list-style-type: none"> - Check if current APP version is the latest version. If not, process update. 	 Update
Setting	<ul style="list-style-type: none"> - One click on "Setting" and jump to setting page including Conference Control, Network setting, and LAN Control. - Only host can use setting feature, and the "Setting" icon will be gray out in guest mode. 	 Setting
Preference	<ul style="list-style-type: none"> - "Preference" will remember your device ID and the app will link to it directly next time. 	 Preference

Setting

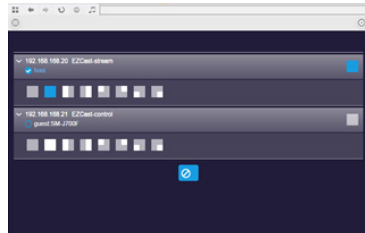
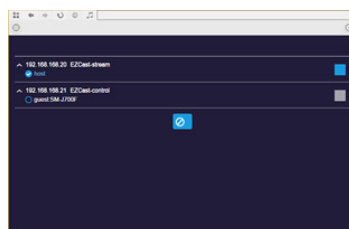
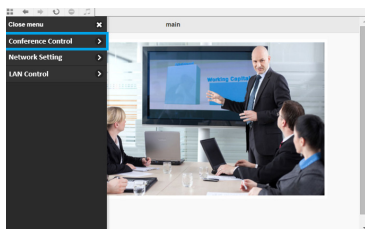
One click on "Setting" and jump to setting page including Conference Control, Network Setting, and LAN Control.



Conference Control

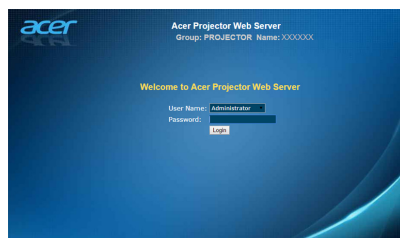
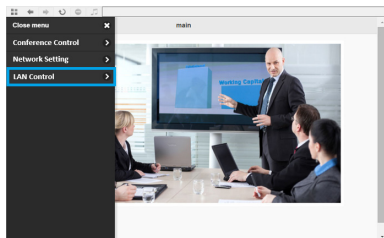
The host control ensures the right of projection for the main presenter. The user is divided into two levels. The highest privilege is assigned to Level 1 and the lowest one is assigned to Level 2.

Level 1	Host	For the first user using eDisplayPro to make the connection, all guests are allowed for projection only with the permission from the host. The conference control can only be controlled by the host to assign the permission and position of projection to the guest.
Level 2	Guest	The user who is not the first one using eDisplayPro may conduct the projection only with the permission from the host.



LAN Control

Press the "LAN Control" item will link to the Login in page of Acer Projector Gateway Webpage. A password is needed to login in before using. For more details, see "Acer Projector Gateway Webpage."

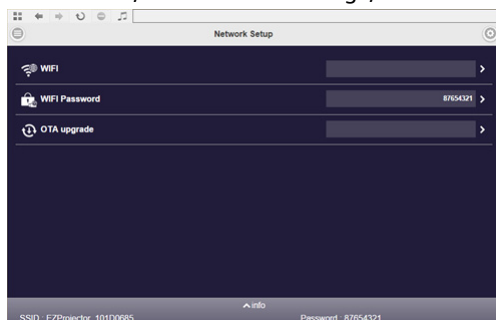




Note: For LAN control function, please make sure your LAN cable is connected to projector.

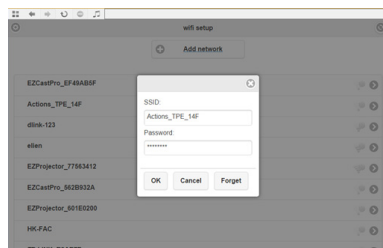
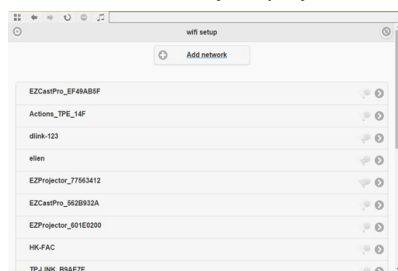
Network Setting

Network Setting includes WiFi, WiFi Password Change, and Software Upgrade.



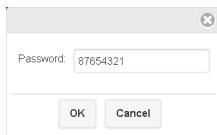
(1) WiFi

To set available network for your projector's access.



(2) WiFi Password Change

Press the "WiFi password" item will pop up a window showing the current password, and enter the new password and press "Confirm" to change the password.

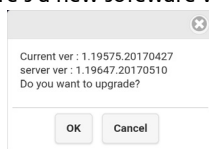


Remark: It is required to re-connect to projector after changing the WiFi password.

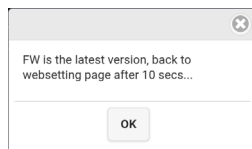
(3) Software Upgrade

Press the "Software Upgrade" item will pop up a message which will show the below three situations:

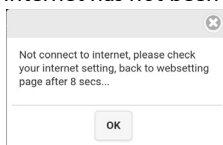
A. Found there's a new software version and request upgrade.



B. Found current software is the latest version.



C. Found the internet has not been connected yet.

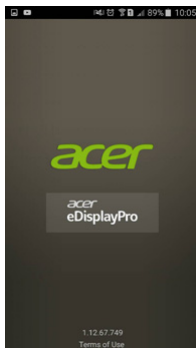


Acer eDisplayPro Management Interface (iOS/Android)

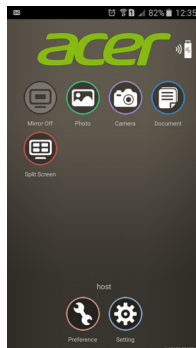
Acer eDisplayPro features functions such as Photo, Live cam, Office viewer, and Split Screen. Once executing this app, you can project the small screen from your device to a bigger one via projector.



(APP Shortcut)



(Before login)



(After login)

Function and Features

■ Mirroring

- Mirroring mobile screen.
- Required 3.5mm phone jack or speaker to line out the mobile content voice.
- Support Android OS v5.0 or above. Suggest CPU with Quad Core or above.



Note 1: Mirroring display is mainly for static document presentation and does not support iOS.

Note 2: Video mirroring may cause voice and image lag.

■ Photo

- In Photo viewer, you can select photo and it will be displayed on projector.
- It is required to allow eDisplayPro to share your camera roll and enable the location service before using Photo function in iOS.

■ Live Camera

- Live camera is a real object camera which allows you to stream the image from mobile device's camera, and take a snap shot to edit.

- You can adjust image quality and switch from Front/Rear camera. You can enable Sketch and save the current image to album.

■ Document

- The document viewer can support Microsoft office and PDF documents.
- For APPLE devices, before you start to cast, please remember to sync the document files to your iOS device through iTunes.
- Some documents may not be displayed as same as shown on PC.

■ Split Screen

- LAN/WiFi source will allow max. 4 users to display on screen together, but only Host can decide the position he wants, other guest's screens will be placed automatically after the request is allowed.
- The Split Screen not support audio and streaming.
- With the permission from the host, the projection sequence is upper left, upper right, lower left and lower right.

■ Preference

- "Preference" will remember your device ID. You can save the current hardware to preferred device, and the app will find the preferred device and link to it directly next time.

■ Setting

One click on "Setting" and jump to setting page including Conference Control, Network Setting, and LAN Control.



For more details on setting function, you could refer to the introduction of "Setting" part in Acer eDisplayPro Interface (Windows/Mac OS).

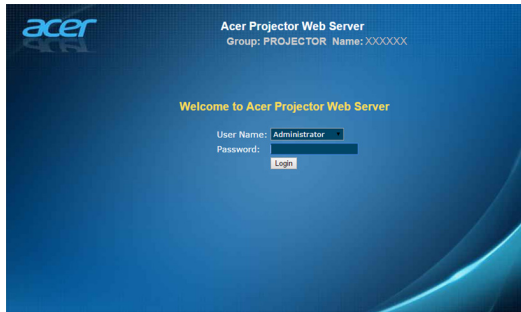
Acer Projector Webpage Gateway Management

How to Login in

Make sure you projector connected LAN cable to your device and set DHCP by off in Network. Open browser and enter the Server IP address by 192.168.100.10 to find below homepage of acer webpage management. A password is required to login in before using.

Select a user and enter correct password:

- **Administrator** is with high authority that can process more operations such as network setting and alert setting. Default password of administrator is "admin".
- **User** is with normal authority with default password by "user".



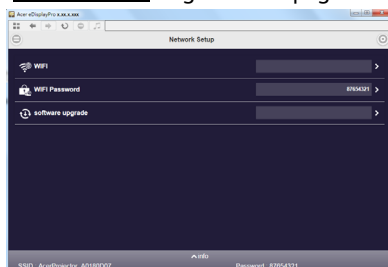
After login, main function pages will appear, i.e. **Home, Control Panel, Network Setting, Alert Setting, and Logout.**



Note 1: Home page is automatically selected after login.

Note 2: If projector with Acer projection-Kit (optional), user could open WiFi setting on PC and connect Projector ID (showed by

AcerProjector_XXXXXXX) first. Then, open browser and enter by 192.168.168.1 to go for webpage interface.



Home

This is Home page which shows basic information of connected projector and provides Acer eDisplayPro installer download for Windows & Mac PC. There is no control on this page. Information on this page will be updated once this page shows up.

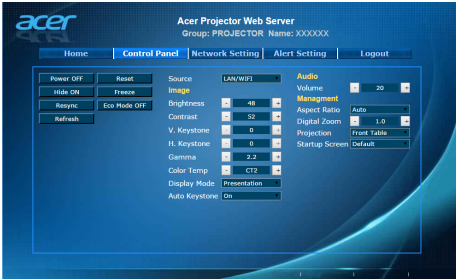


Note 1: Control Panel and Networking Setting are only for Administrator account.

Note 2: Ensure that you have administrator-level permission on your NB/PC so that you can install the software.

Control Panel

Control and adjust projector setting value via this page.



Network Setting

End user can set IP address, group name and password as wish. After change network configurations or password, projector will reboot automatically after press "Apply".



- Note 1:** Group Name and projector Name must be less than 32 characters.
- Note 2:** After Network configurations are changed, LAN module may reboot.

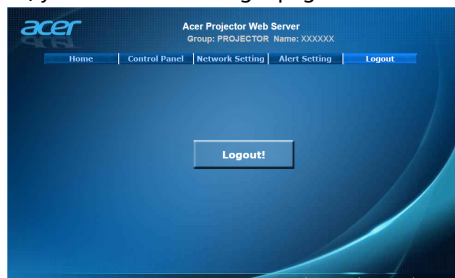
Alert Setting

End user can send mail with error message right away if projector has problem.



Log Out

After tap Logout, you will return to login page within 5 seconds.



Note: Functions vary depending on model definition.

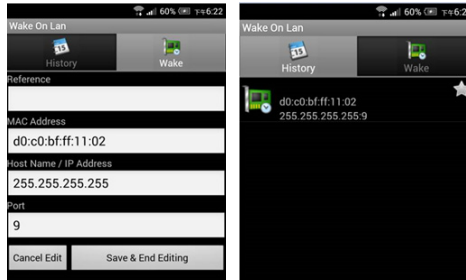
Wake-On-LAN (Standby)

User could power on projector under power standby mode via Wake On LAN (WOL) application on PC/Mobile

Instructions:

- Step 1: Download and install Wake On LAN (WOL) application. (Mobile: Search on Google store / Apple APP store. NB/PC: Search for a free tool on internet. Keywords by Wake On LAN or WOL download)
- Step 2: Make sure Wake-On-LAN (Standby) item in projector's OSD is set to On.

- Step 3: Execute Wake On LAN (WOL) application. Input "Mac Address" show in Network OSD page or Installation menu, IP address by "255.255.255.255" and port value entered by 9. Save once done.
- Step 4: Tape the saved item and tap it to power on projector.



Note 1: Make sure your projector is being plugged power cord and power LED shows solid red in advance.

Note 2: Make sure LAN cable is connected to projector and internet is workable.

Note 3: If input IP by "255.255.255.255" cannot work, try to input numbers followed by first 3 sections of your router IP address and the last section by 255 => "XXX.XXX.XXX.255"

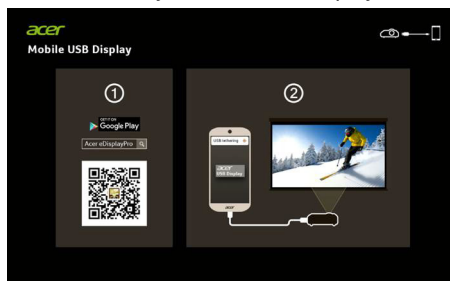
Ex: If your router IP address is "123.456.789.111", the input IP address on app is "123.456.789.255".

Mobile USB Display

User could connect Android mobile to projector's USB port via mobile USB cable to do mobile USB display.

Instructions:

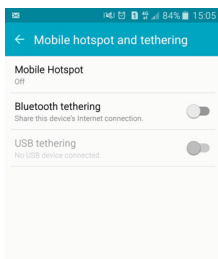
- Step 1, Select source by "Mobile USB Display".



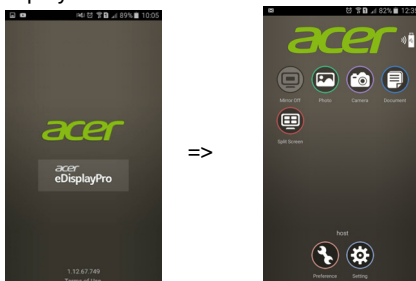
- Step 2, Download and install Acer eDisplayPro APP for mobile.



- Step 3, Connect mobile to projector's USB A 2 via mobile USB cable.
- Step 4, Enable "USB Tethering" or USB network connection. (Location is normally by Setting ' More ' USB Tethering ' Enable)



- Step 5, Open Acer eDisplayPro APP and tap "eDisplayPro" icon to do mobile display.



Note 1: Support Android OS v5.0 or above and suggest CPU with Quad Core or above.

Note 2: Required 3.5mm phone jack or speaker to line out the mobile content voice.

Note 3: The location of USB tethering varies depending on different Android mobiles.

Note 4: Does not support apps with DRM (Digital Rights Management).

Note 5: Please use your default cable accessory when using USB Display function.

Note 6: Mobiles with type C may not able to support USB display function which is USB 2.0 interface.

Note 7: After connecting mobile to projector's USB A 2 via mobile USB cable, please turn on USB tethering or USB network connection which is normally in Setting/More/USB Tethering. And then, activate eDisplayPro app to enjoy USB display.

PC USB Display

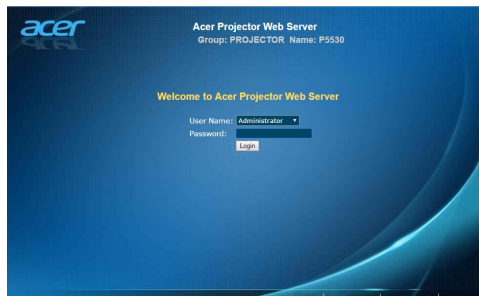
User could connect PC to projector's USB port via USB cable (type A to type A) to do PC USB display

Instructions:

- Step 1: Select source by "PC USB Display".



- Step 2: Connect PC to projector's USB A 2 via USB cable.
- Step 3: Download and install Acer eDisplayPro. Make sure your projector connected USB cable to your PC. Open the browser and enter the Server IP address by file form 192.168.203.1 to find below homepage of acer webpage management. A password is required to login in before using. Default password of administrator is "admin".



Important Notice:

1. Support Microsoft win7 to win 10 and Mac OS 10.12 to 10.13.
2. Suggest use USB2.0 and they have potential compatibility issues with USB3.0 and type C.
3. Suggest the cable length should be within 1.2m and data exchange capability.
4. Do not use the cable of questionable origin.